

THERMOWELLS FOR ADJUST-ANGLE THERMOMETERS

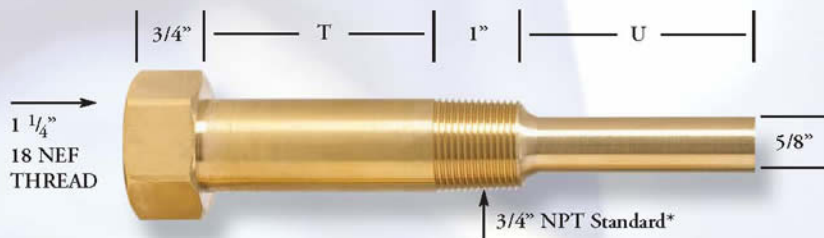
WGTC WEKSLER GLASS
THERMOMETER CORP.

STANDARD TYPE



STEM LENGTH	"U" DIM.		CATALOG NUMBER			
			BRASS	STEEL	304 ST ST	316 ST ST
3 1/2"	2 1/2"		T1E3D2	T3E3D2	T6E3D2	T4E3D2
6"	5"		T1M3D2	T3M3D2	T6M3D2	T4M3D2
9"	8"		T1S3D2	T3S3D2	T6S3D2	T4S3D2
12"	11"		T1T3D2	T3T3D2	T6T3D2	T4T3D2

LAGGING EXTENSION TYPE



STEM LENGTH	"T"	"U"	CATALOG NUMBER			
	DIM.	DIM.	BRASS	STEEL	304 ST ST	316 ST ST
3 1/2"	1	1 1/2"	T1E3D2B	T3E3D2B	T6E3D2B	T4E3D2B
6"	2 1/2"	2 1/2"	T1M3D2E	T3M3D2E	T6M3D2E	T4M3D2E
9"	3"	5"	T1S3D2E	T3S3D2E	T6S3D2E	T4S3D2E
12"	3"	8"	T1T3D2E	T3T3D2E	T6T3D2E	T4T3D2E

1 1/4" 18 NEF THREAD

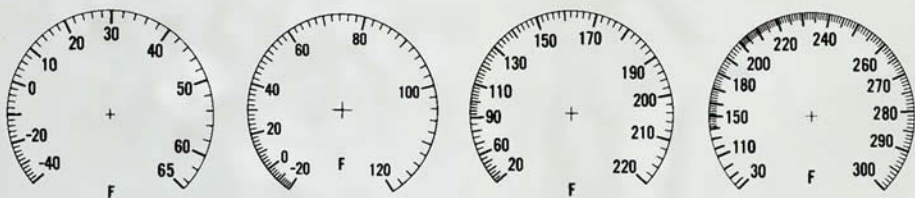


CATALOG NUMBER	
BRASS	304 ST ST
T143D2	T643D2

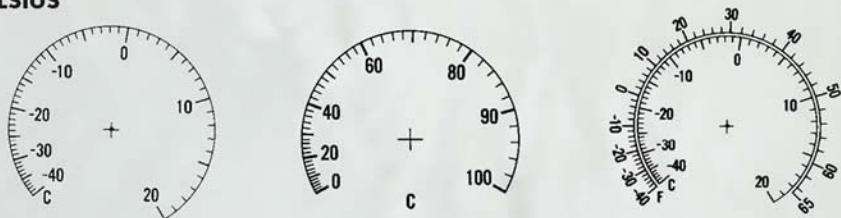
*1/2" NPT and 1" NPT available - consult factory

DIALS AND THERMOWELLS FOR VAPOR ACTUATED THERMOMETERS

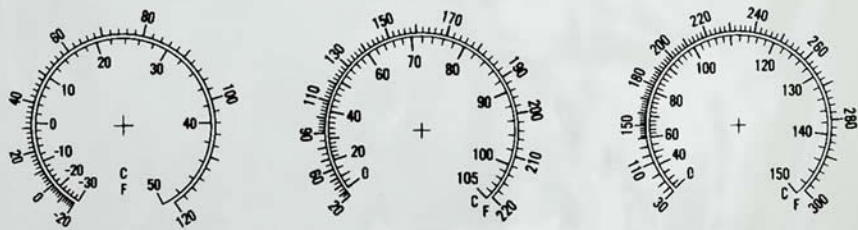
FAHRENHEIT



CELSIUS



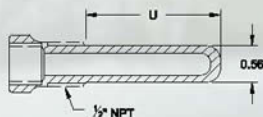
DUAL SCALE



THERMOWELLS

CATALOG NUMBER	PROCESS CONN.	IMMERSION LENGTH "U"	MATERIAL
V22B	1/2" NPT	2"	BRASS
V23B	3/4" NPT	2"	BRASS
V22SS	1/2" NPT	2"	316 ST. ST.
V23SS	3/4" NPT	2"	316 ST. ST.
V42B	1/2" NPT	3 1/2"	BRASS
V43B	3/4" NPT	3 1/2"	BRASS
V42SS	1/2" NPT	3 1/2"	316 ST. ST.
V43SS	3/4" NPT	3 1/2"	316 ST. ST.

MODEL V22 ▶



MODEL V23 ▶

